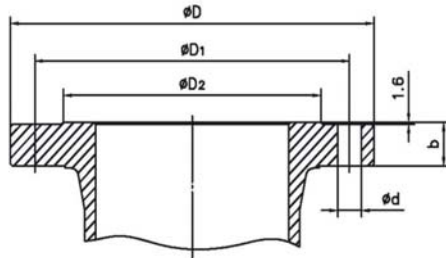
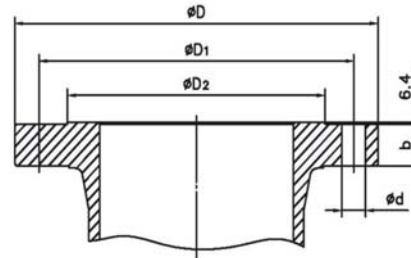


Steel Pipe Flanges

ASME B 16.47 Series A & MSS SP 44 RF (raised face)



Class 150&Class 300 RF Flanges

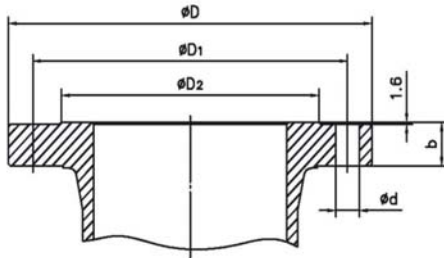


Class 600&Class 900 RF Flanges

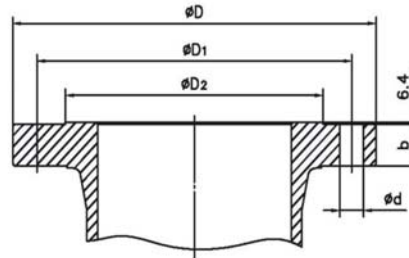
Class	Nominal Size		D		D1		D2		b		d		Bolt	
	NPS	DN	in	mm	in	mm	in	mm	in	mm	in	mm	No.	Dia.
150lb PN20	26	650	34.25	870	31.75	806.5	29.50	749	2.69	68.3	1.38	35	24	1 1/4
	28	700	36.50	927	34.00	863.6	31.50	800	2.81	71.4	1.38	35	28	2 3/4
	30	750	38.75	984	36.00	914.4	33.75	857	2.94	74.7	1.38	35	28	1 1/4
	32	800	41.75	1060	38.50	977.9	36.00	914	3.19	81.0	1.62	41	28	1 1/2
	34	850	43.75	1111	40.50	1028.7	38.00	965	3.25	82.6	1.62	41	32	1 1/2
	36	900	46.00	1168	42.75	1085.9	40.25	1022	3.56	90.4	1.62	41	32	1 1/2
	38	950	48.75	1238	45.25	1149.4	42.25	1073	3.44	87.4	1.62	41	32	1 1/2
	40	1000	50.75	1289	47.25	1200.2	44.25	1124	3.56	90.4	1.62	41	36	1 1/2
	42	1050	53.00	1346	49.50	1257.3	47.00	1194	3.81	96.8	1.62	41	36	1 1/2
	48	1200	59.50	1511	56.00	1422.4	53.50	1359	4.25	108.0	1.62	41	44	1 1/2
	54	1350	66.25	1683	62.75	1593.9	59.50	1511	4.75	120.7	1.88	48	44	1 3/4
56	1400	68.75	1746	65.00	1651.0	62.00	1575	4.88	124.0	1.88	48	48	1 3/4	
60	1500	73.00	1854	69.25	1759.0	66.00	1676	5.19	131.8	1.88	48	52	1 3/4	
300lb PN50	26	650	38.25	972	34.50	876.3	29.50	749	3.12	79.2	1.75	44	28	1 5/8
	28	700	40.75	1035	37.00	939.8	31.50	800	3.38	85.9	1.75	44	28	1 5/8
	30	750	43.00	1092	39.25	997.0	33.75	857	3.62	91.9	1.88	48	28	1 3/4
	32	800	45.25	1149	41.50	1054.1	36.00	914	3.88	98.6	2.00	51	28	1 7/8
	34	850	47.50	1207	43.50	1104.9	38.00	965	4.00	101.6	2.00	51	28	1 7/8
	36	900	50.00	1270	46.00	1168.4	40.25	1022	4.12	104.6	2.12	54	32	2
	38	950	46.00	1168	43.00	1092.2	40.50	1029	4.25	108.0	1.62	41	32	1 1/2
	40	1000	48.75	1238	45.50	1155.7	42.75	1086	4.50	114.3	1.75	44	32	1 5/8
	42	1050	50.75	1289	47.50	1206.5	44.75	1137	4.69	119.1	1.75	44	32	1.625
	48	1200	57.75	1467	54.00	1371.6	51.25	1302	5.25	133.4	2.00	51	32	1 7/8
	600lb PN110	26	650	40.00	1016	36.00	914.4	29.50	749	4.25	108.0	2.00	51	28
28		700	42.25	1073	38.00	965.2	31.50	800	4.38	111.3	2.12	54	28	2
30		750	44.50	1130	40.25	1022.4	33.75	857	4.50	114.3	2.12	54	28	2
32		800	47.00	1194	42.50	1079.5	36.00	914	4.62	117.3	2.38	60	28	2 1/4
34		850	49.00	1245	44.50	1130.3	38.00	965	4.75	120.7	2.38	60	28	2 1/4
36		900	51.75	1314	47.00	1193.8	40.25	1022	4.88	124.0	2.62	67	28	2 1/2
900lb PN150	26	650	42.75	1086	37.50	952.5	29.50	749	5.50	139.7	2.88	73	20	2 3/4
	28	700	46.00	1168	40.25	1022.4	31.50	800	5.62	142.7	3.12	79	20	3

Steel Pipe Flanges

ASME B 16.47 Series B & API 605 RF (raised face)



Class 150&Class 300 RF Flanges



Class 600&Class 900 RF Flanges

Class	Nominal Size		D		D1		D2		b		d		Bolt	
	NPS	DN	in	mm	in	mm	in	mm	in	mm	in	mm	No.	Dia.
150lb PN20	26	650	30.94	786	29.31	744.5	28.00	711	1.62	41.1	0.88	22	36	3/4
	28	700	32.94	837	31.31	795.3	30.00	762	1.75	44.5	0.88	22	40	3/4
	30	750	34.94	887	33.31	846.1	32.00	813	1.75	44.5	0.88	22	44	3/4
	32	800	37.06	941	35.44	900.2	34.00	864	1.81	46.0	0.88	22	48	3/4
	34	850	39.56	1005	37.69	957.3	36.25	921	1.94	49.3	1.00	25	40	7/8
	36	900	41.62	1057	39.75	1009.7	38.25	972	2.06	52.3	1.00	25	44	7/8
	38	950	44.25	1124	42.12	1069.8	40.25	1022	2.12	53.8	1.12	28	40	1
	40	1000	46.25	1175	44.12	1120.6	42.50	1080	2.19	55.6	1.12	28	44	1
	42	1050	48.25	1226	46.12	1171.4	44.50	1130	2.31	58.7	1.12	28	48	1
	48	1200	54.81	1392	52.56	1335.0	50.75	1289	2.56	65.0	1.25	32	44	1 1/8
	54	1350	61.00	1549	58.75	1492.3	56.75	1441	2.81	71.4	1.25	32	56	1 1/8
56	1400	63.00	1600	60.75	1543.1	58.75	1492	2.88	73.2	1.25	32	60	1 1/8	
60	1500	67.94	1726	65.44	1662.2	63.00	1600	3.00	76.2	1.38	35	52	1 1/4	
300lb PN50	26	650	34.12	867	31.62	803.1	29.00	737	3.50	88.9	1.38	35	32	1 1/4
	28	700	36.25	921	33.75	857.3	31.00	787	3.50	88.9	1.38	35	36	1 1/4
	30	750	39.00	991	36.25	920.8	33.25	845	3.69	93.7	1.50	38	36	1 3/8
	32	800	41.50	1054	38.50	977.9	35.50	902	4.06	103.1	1.62	41	32	1 1/2
	34	850	43.62	1108	40.62	1031.7	37.50	953	4.06	103.1	1.62	41	36	1 1/2
	36	900	46.12	1171	42.88	1089.2	39.75	1010	4.06	103.1	1.75	44	32	1 5/8
	38	950	48.12	1222	44.88	1140.0	41.75	1060	4.38	111.3	1.75	44	36	1 5/8
	40	1000	50.12	1273	46.88	1190.8	43.88	1115	4.56	115.8	1.75	44	40	1 5/8
	42	1050	52.50	1334	49.00	1244.6	46.00	1168	4.69	119.1	1.88	48	36	1 3/4
48	1200	59.50	1511	55.75	1416.1	52.25	1327	5.06	128.5	2.00	51	40	1 7/8	
600lb PN110	26	650	35.00	889	31.75	806.5	28.62	727	4.38	111.3	1.75	44	28	1 5/8
	28	700	37.50	953	34.00	863.6	30.88	784	4.56	115.8	1.88	48	28	1 3/4
	30	750	40.25	1022	36.50	927.1	33.12	841	4.94	125.5	2.00	51	28	1 7/8
	32	800	42.75	1086	38.75	984.3	35.25	895	5.12	130.0	2.12	54	28	2
	34	850	45.75	1162	41.50	1054.1	37.50	953	5.56	141.2	2.38	60	24	2 1/4
	36	900	47.75	1213	43.50	1104.9	39.75	1010	5.75	146.1	2.38	60	28	2 1/4
	900lb PN150	26	650	40.25	1022	35.50	901.7	30.00	762	5.31	134.9	2.62	67	20
28	700	43.50	1105	38.25	971.6	32.25	819	5.81	147.6	2.88	73	20	2 3/4	

Note: ASME B16.47 Series B flanges are API 605 flanges. API 605 has been cancelled.